

Brixton Hill, Brixton, SW2

2 bedroom flat - conversion for sale

£450,000

Leasehold

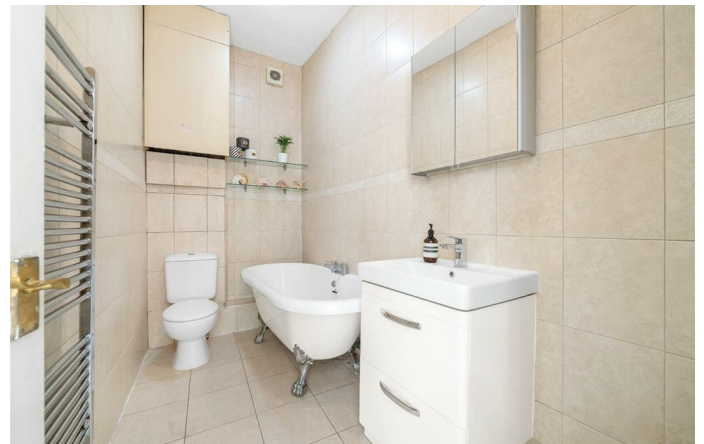
Property Details

An appealing two double bedroom apartment in a characterful Victorian property on Brixton Hill. Natural light is a re-occurring theme throughout this beautifully presented home, with an abundance of windows creating a bright and inviting ambience. The reception is no exception with four characterful arched sash windows framed with plantation shutters bathing the room with light from two aspects, overlooking the greenery of Rush Common opposite. Neutral and spacious this glorious room has the dimensions in which to lounge or dine, finished with new modern flooring. The space flows effortlessly through to the kitchen, allowing for a seamless transition ideal for entertaining. Recently fitted, the blue kitchen cabinetry is topped with quartz worktops and open shelving to create a rustic, contemporary feel, with high-end appliances and ample storage. The two double bedrooms are set to the rear, separated by the entrance hall for privacy. Both bedrooms feature two almost floor to ceiling windows, with secondary glazing to promote a peaceful sleep. The bathroom is tasteful with a roll-top bathtub and a separate shower. This beautiful home is completed by a handy storage cupboard in the hallway.

Features

- Two double bedrooms
- Victorian conversion
- Bright and airy throughout
- Characterful features
- Overlooking Rush Common
- Local amenities on the doorstep
- Central Brixton a twenty-minute stroll or five-minute bus ride
- Access to the Victoria Line and overground
- Short walk to multiple parks
- Chain-free

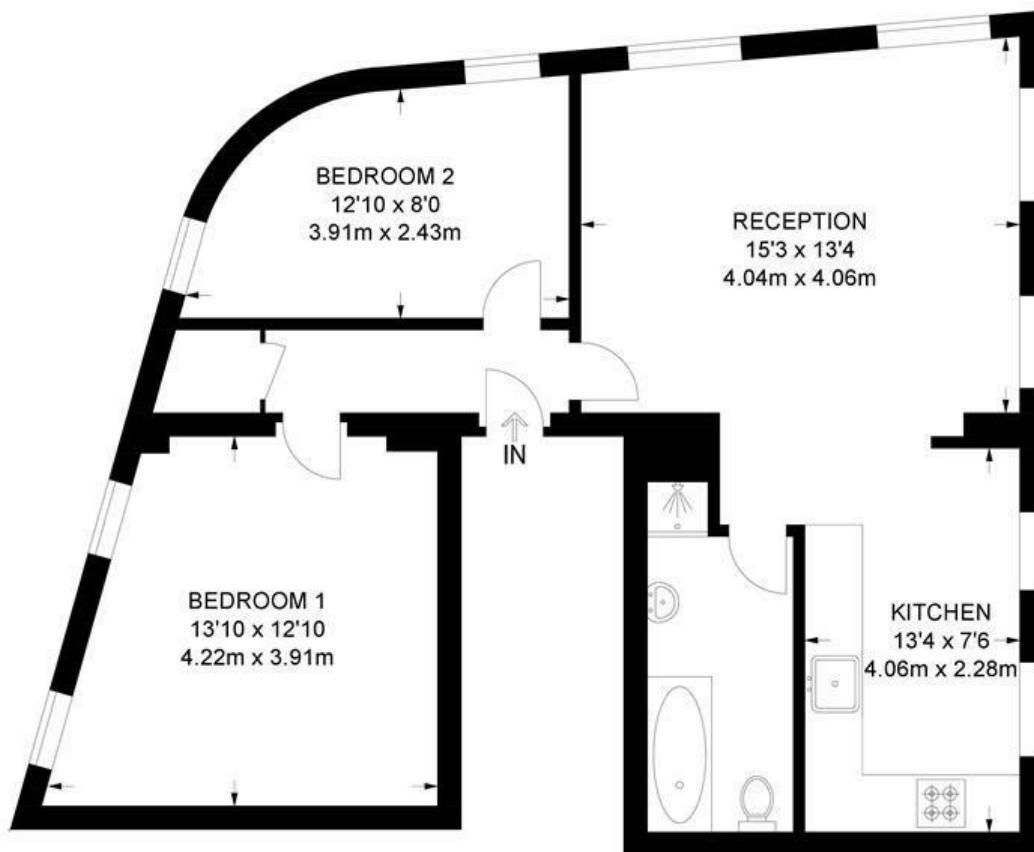
Council tax band C EPC rating D (67)



Brixton Hill, Brixton, SW2

Brixton Hill, SW2
2 Bedroom Flat

APPROXIMATE GROSS INTERNAL AREA: **678 SQ FT / 63 SQ M**



FIRST FLOOR



While we try our very best, floor plans are produced as a guide only and we take no responsibility for the precise accuracy with which any property is represented.

Brixton Hill, Brixton, SW2

